



Banner | Aetna empowers people to reverse Type 2 diabetes through Virta

Banner | Aetna is now offering fully insured clients access to Type 2 Diabetes Reversal Treatment through Virta. This partnership has the potential to change your company's total cost of care and the health of your employees.

See the impact Virta is making



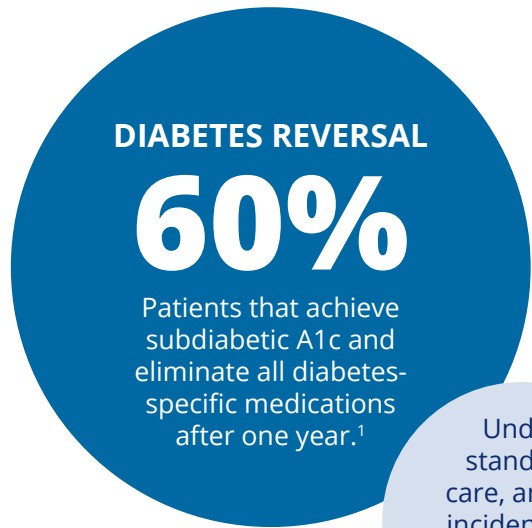
Rx elimination 59% ↓

Average diabetes Rx dosage elimination at one year based on peer-reviewed clinical data.¹



Cost savings \$425

Per patient, per month cost savings, based on claims analysis using third-party validated methodology.³



Under standard care, annual incidence of remission of diabetes is <1%.²

BannerAetna.com



¹Hallberg SJ et al. Diabetes Therapy. 2018;9(2):583-612. For patients completing 1 year of treatment.

²Karter, Andrew J et al. "Incidence of remission in adults with Type 2 diabetes: the diabetes & aging study." Diabetes care vol. 37,12 (2014): 3188-95. doi:10.2337/dc14-0874.

³Virta Health, Analysis of Type 2 Diabetes Reversal Cost Savings, Sept. 2021.



What you don't pay for

- Implementation
- Non-participants
- Engagement

Bill through claims

Virta is a medical provider and bills will be paid through claims. Because of this, including Virta does not affect your administrative budget.

2:1 ROI over 24 months

Cost savings are direct and realized rapidly due to removal of costly diabetes medications.¹

Get the reversal advantage with Virta, offered by Banner | Aetna

The value of Virta is clear, especially when you compare average outcomes with what is possible under standard care or tech-enabled diabetes management. Virta delivers results — while simultaneously removing the need for costly medications.

The difference between diabetes reversal vs. management

	Standard Care ² One Year Completers	Diabetes Management	Virta ² One Year Completers
A1c	↑ 0.2	↓ 0.6 ³ One Year Completers	↓ 1.3
Rx	↑ 7%	↑ 3% ⁴ Increase in medication utilization	↓ 59%
Weight Loss	0 lbs	↓ 1 lb ⁵ 12 week Completers	↓ 31 lbs

BannerAetna.com



¹Virta Health, Analysis of Type 2 Diabetes Reversal Cost Savings, Sept. 2021. ROI calculated using estimated savings and average Virta treatment costs over 24 month period. Estimated Rx savings observed over 2 years among patients completing 1 year of Virta treatment.

²Hallberg SJ et al. Diabetes Ther. 2018; 9(2): 583-612. Outcomes among one year completers (83% retention in Virta Treatment; 90% retention in Standard Care). Rx refers to the net change in diabetes-specific prescription volume at one year (which excludes metformin) compared to baseline and multiple insulins prescribed to a patient were counted as one rx.





³Bollyky JB et al. JMIR Diabetes. 2019; 4, e14799 (Outcomes among one year completers (44% retention in Livongo).

⁴Diabetes-related prescription utilization according to five-client, two-year DiD analysis (slide 34). Livongo presentation at EBPA 2018. HYPERLINK "<https://protect-us.mimecast.com/s/l69iCBBjn0HPWGZlwINXwMF?domain=ebpa.org>" https://www.ebpa.org/resources/presentations/2018/Livongo_EBPA_20SEP2018.pdf

⁵Bollyky JB et al. J Diabetes Res. 2018; 3961730. (Outcomes at 12 weeks for Livongo + scale group).

A complete suite of offerings to fit any population

Through Banner | Aetna's partnership with Virta, groups¹ can choose the program that works best for them.

 <h2>Obesity Treatment</h2> <p>Deliver clinically significant weight loss of 5-12% for patients struggling with obesity</p> <p>For patients with BMI > 30</p> <p>NUTRITIONAL THERAPY + ADVANCED TELEHEALTH</p>	 <h2>Prediabetes Reversal</h2> <p>Return blood sugar to sub-prediabetic levels and deliver clinically significant weight loss</p> <p>For patients with prediabetes (A1c from 5.7 to 6.4)</p> <p>NUTRITIONAL THERAPY + ADVANCED TELEHEALTH</p>	 <h2>Diabetes Reversal</h2> <p>Return blood sugar to subdiabetic levels and safely de-prescribe diabetes medications</p> <p>For patients with T2D ready to reverse</p> <p>NUTRITIONAL THERAPY + ADVANCED TELEHEALTH</p>	 <h2>Diabetes Management</h2> <p>Monitor and control blood sugar, provide behavioral counseling and nudge Type 2 diabetics to reversal</p> <p>For patients with T2D & not ready to reverse, or T1D</p> <p>ADVANCED TELEHEALTH</p>
--	--	--	--



Learn more about reversing diabetes at VirtaHealth.com/Join/BannerAetna.

For more information, please contact your Banner | Aetna sales representative.

BannerAetna.com



¹Groups with 7,500 members or more can choose any combination of products, but must include Diabetes Reversal. Groups with less than 7,500 members can choose to offer Diabetes Reversal only or the full product suite.

Banner|Aetna is the brand name used for products and services provided by Banner Health and Aetna Health Insurance Company and Banner Health and Aetna Health Plan Inc. Providers are independent contractors and are not agents of Banner|Aetna. Provider participation may change without notice. Refer to BannerAetna.com for more information about Banner|Aetna® plans. Health benefits and health insurance plans are offered and/or underwritten by Banner Health and Aetna Health Insurance Company and/or Banner Health and Aetna Health Plan Inc. (Banner|Aetna). Each insurer has sole financial responsibility for its own products. Banner Health and Aetna Health Insurance Company and Banner Health and Aetna Health Plan Inc. are affiliates of Banner Health and of Aetna Life Insurance Company and its affiliates (Aetna). Aetna and Banner Health provide certain management services to Banner|Aetna.

©2022 Banner Health and Aetna Health Insurance Company and Banner Health and Aetna Health Plan Inc. 931304-01-01 (1/22)